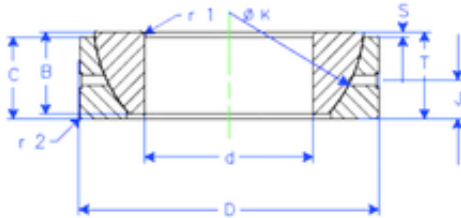




LAD Bearing International Trade Co., ...

Enduro GE 130 SX plain bearings



GE 130 SX Bearing 2D drawings and 3D CAD models

Bearing No. GE 130 SX

Size	130x200x45 mm
Bore Diameter	130 mm
Outer Diameter	200 mm
Width	45 mm
d	130 mm
D	200 mm
T	45 mm
B	45 mm
C	43 mm
r1 min.	2,5 mm
r2 min.	2,5 mm
J	19 mm
K	188 mm
S	18 mm
Weight	5,9193756 Kg
Basic dynamic load rating (C)	710 kN