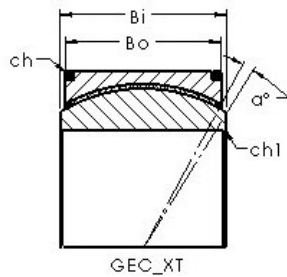
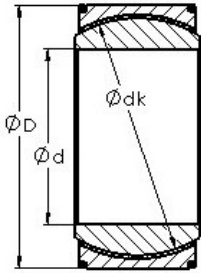




LAD Bearing International Trade Co., ...



AST GEH280XT plain bearings

Bearing No. GEH280XT

Bore Diameter	280 mm
Outer Diameter	400 mm
Bearing Type - double fractured	extra wide
Bore Dia (d)	280.0000
Outer Dia (D)	400.0000
Outer Width (Bo)	190.0000
Inner Width (Bi)	200.0000
Dynamic Load Rating (Cr)	10,540,000
Static Load Rating (Cor)	25,300,000
Max. shaft corner radius, or 45 deg. chamfer (ch1)	1.100
Max. housing corner radius, or 45 deg. chamfer (ch)	1.100
Spherical Diameter (dk or Dk)	370.000
Mis-alignment Angle (α deg.)	2
Weight (g)	96,000.00
Material	Inner ring and outer ring are made from 52100 chrome steel, or equivalent

GEH280XT Bearing 2D drawings and 3D CAD models