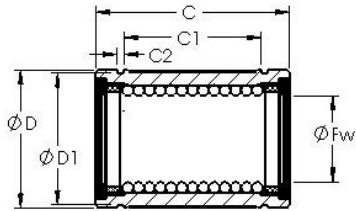


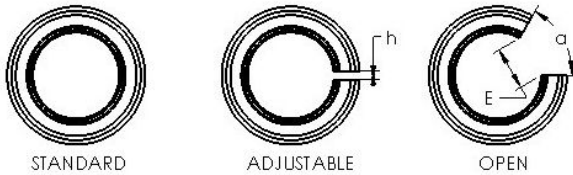


LAD Bearing International Trade Co., ...



AST LBE 25 AJ linear bearings

Bearing No. LBE 25 AJ



Bore Diameter	25 mm
Bearing Type	adjustable clearance type
Dynamic Load Rating (Cr)	1,070
Static Load Rating (Cor)	2,020
Shaft Dia. (Fw)	25.000
Outside Dia. (D)	40.000
Length (C)	58.000
Groove-to-groove length (C1)	40.000
Groove Width (C2)	1.850
Groove Dia. (D1)	38.000
Adjustable Open Gap (h)	2.000
Weight (g)	159.00
Material	52100 chrome steel, or equivalent

LBE 25 AJ Bearing 2D drawings and 3D CAD models