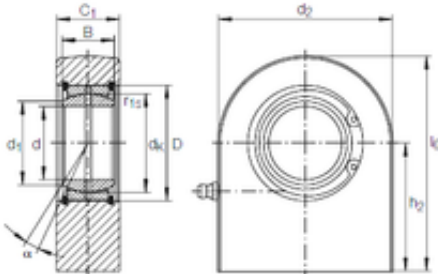




LAD Bearing International Trade Co., ...

INA GF 45 DO plain bearings



GF 45 DO Bearing 2D drawings and 3D CAD models

Bearing No. GF 45 DO

Size	45x68x32 mm
Bore Diameter	45 mm
Outer Diameter	68 mm
Width	32 mm
d	45 mm
D	68 mm
B	32 mm
d1	50,7 mm
d2	110 mm
dk	60 mm
h2	77 mm
l6 max.	132 mm
r1 min.	0,6 mm
C1	40 mm
C1 max	41,5 mm
Angle	7 °
Weight	3,4 Kg
Basic dynamic load rating (C)	127 kN